

The logo for GLB Property Services Ltd, featuring the letters 'GLB' in a white, sans-serif font on a dark blue square background.

PROPERTY SERVICES LTD



51 Walsall Street , Coventry, CV4 8EZ

£475 Per Calendar Month



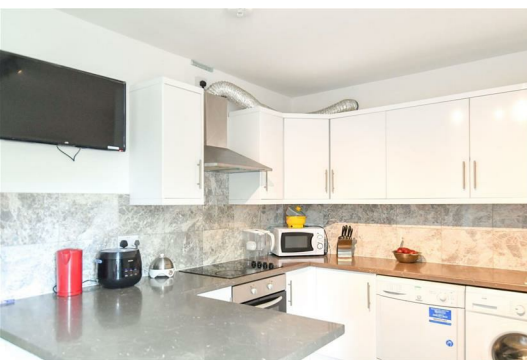
Double En-Suite Room Available September 2021 In The Canley Area of Coventry - Excellent Location For Warwick University (15 minute walk) / Local Amenities & Including Bills

The property comprises of the following...

- * Communal Kitchen/Diner with seating area
- * Spacious double bedroom with en-suite shower room
- * 32 inch JVC plasma TV
- * Garden to the rear of the property
- * Furnished throughout
- * Off Street parking

Available 15th September 2021

£475pcm Including Bills (gas, water, electric & internet)



Area Map



Energy Efficiency Graph

Energy Efficiency Rating		
	Current	Potential
Very energy efficient - lower running costs		
(92 plus) A		85
(81-91) B		
(69-80) C		
(55-68) D	58	
(39-54) E		
(21-38) F		
(1-20) G		
Not energy efficient - higher running costs		
England & Wales	EU Directive 2002/91/EC	

Environmental Impact (CO ₂) Rating		
	Current	Potential
Very environmentally friendly - lower CO ₂ emissions		
(92 plus) A		85
(81-91) B		
(69-80) C		
(55-68) D		
(39-54) E		
(21-38) F		
(1-20) G		
Not environmentally friendly - higher CO ₂ emissions		
England & Wales	EU Directive 2002/91/EC	

These particulars, whilst believed to be accurate are set out as a general outline only for guidance and do not constitute any part of an offer or contract. Intending purchasers should not rely on them as statements of representation of fact, but must satisfy themselves by inspection or otherwise as to their accuracy. No person in this firm's employment has the authority to make or give any representation or warranty in respect of the property.

GLB Property Services Ltd
Bayley House, 22-23 Bayley Lane
Coventry, CV1 5RJ

T. 02476 433416

info@glbpropertyservices.com
www.glbpropertyservices.com

